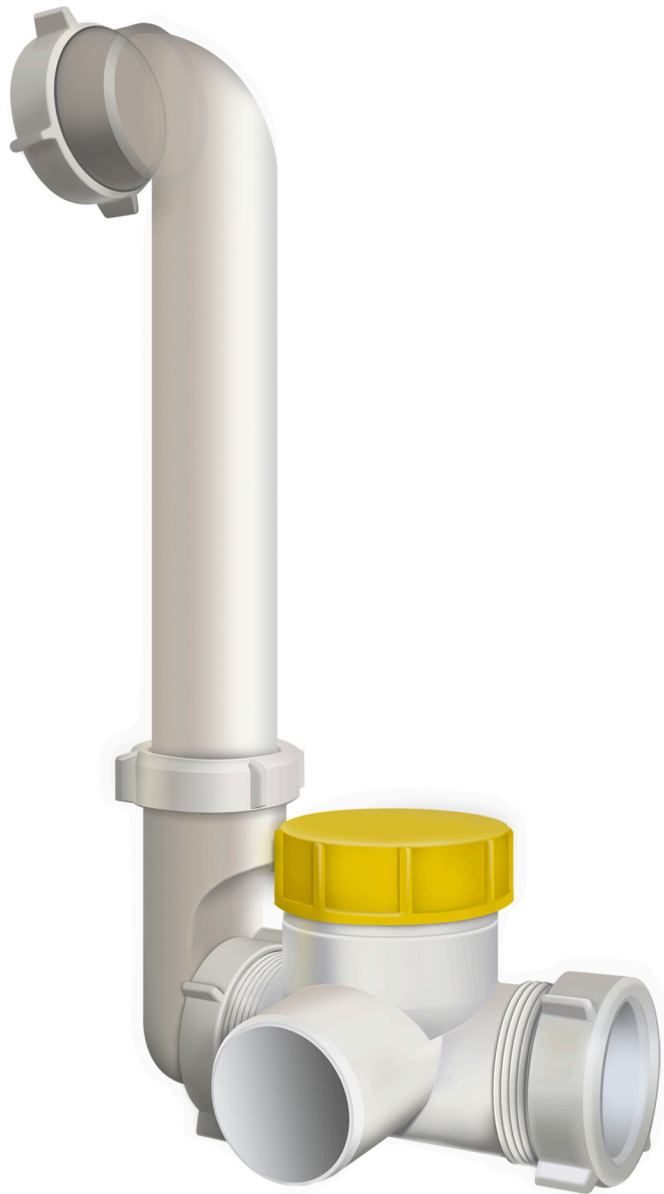


CONNECTOR

A connector made from propylene, resistant to corrosion and decay is used to drain the condensate in the air conditioning systems of low pressure. The product in the standard package is designed for the maximum pressure 2200Pa. In the case of extremely low pressure, extension tube or knee can be shortened, or may be placed in inclined position (see size table). Built-in ball valve prevents the suction of air through the conclusion in the absence of condensate. This connector is easy to maintain and care.

When connect socket with connector, socket should be moisten with water and soap. Each condensate drain system should be provided with a separate siphon. Pipes after the connector may be mounted on the market range tubes.



Size table

The height of the connector is set depending on the pressure in the system. Extension tube or connecting knee can be shortened in accordance with this table.

Pressure in the system	height of connector
2200 Pa	280 mm
2100 Pa	270 mm
2000 Pa	260 mm
1900 Pa	250 mm
1800 Pa	240 mm
1700 Pa	230 mm
1600 Pa	220 mm
1500 Pa	210 mm
1400 Pa	200 mm
1300 Pa	190 mm
1200 Pa	180 mm
1100 Pa	170 mm
1000 Pa	160 mm
800 Pa	140 mm
600 Pa	120 mm
400 Pa	100 mm

CONNECTOR

Special connector is used to drain condensate in air conditioning and ventilation systems

1. Internal screw 1 1/2" - 2 pcs.
2. Rubber adapter 1 1/2" - 1" - 1 pcs.
3. O-ring, 1 pcs.
4. Connecting knee diam.40 mm., 90°, long
5. Connecting knee diam.40 mm., 90°
6. Conical sealing ring, 2 pcs
7. Return valve with a conclusion
8. Cap 1 1/2"
9. Ball valve
10. Cap 2"

